



spare parts for
concrete
equipments

CONTENTS

1	Corporate
2	Quality
3-5	Spare Parts for Concrete Pump
6-10	Spare Parts for Putzmeister
11-15	Spare Parts for Schwing
16-18	Spare Parts for Cifa
19-21	Spare Parts for Sermac
22-23	Spare Parts for Reich
24-28	Spare Parts for Truck Mixer
29-30	Spare Parts for Concrete Plant
31-32	Spare Parts for Silobas



“For 14 Years”

Preference of Concrete Companies

CORPORATE

Utilizing the latest technologies in engineering and management sciences, and with its ISO 9001 certified concept of quality at international standards, our Company shall always continue to follow innovative thinking and contemporary technologies.

SOM KARLAS produces quality spare parts for concrete pump and truck-mixers. The manufacturing product range essentially consists of Schwing, Putzmeister, Cifa, Sermac, Reich, Waitzinger and Truck-Mixer parts. SOM KARLAS factory which covers an area of 6000 m² and we export more than 20 countries without compromising on quality and standards. Our customers satisfaction is priority for us. All the demands of the customers are very important for us. SOM KARLAS export department is highly experienced, adaptable and always take care for customers satisfaction.

Until today, the progress made at Turkey has been well received by the ready-mixed cement community. By raising our quality on daily basis we advanced with sure steps toward our goal of being a sector leader nationally. We are living the pride of embracing the whole world. Having begun as a atelier we have now attained the status of a plant complex and we shall continue on this path with the conviction of better, higher quality and direct-consumer focused service. With your support and suggestions we shall hold light to the future, and we shall carry the principle of never ignoring the necessity of quality and responsibility of leadership.

MISSION

- Speedy supply of spare parts to the ready-mixed sector without compromising quality.
- Acceptance of work force, technology, machinery, equipment and financial resources as its capital.
- Quality control unit shall supervise component production at every stage of manufacturing and minimize risks.
- Client satisfaction is the objective. In order to reach it, quality shall be at the forefront of our products and services. Always respect the environment and public.
- Extensive client portfolio and our references attest to this.

VISION

- Leadership in the market through continuous improvement of quality,
- Targeting the offer of best service to clients,
- Continuous control of calibrations and statistical assessments for autocontrol,
- Manufacturing according to standards and uncompromising quality, Offering best service in production, selling and technical support stages,
- Products resistant to external physical and chemical effects, conforming to criteria,
- To be a manufacturer who respects the environment and public.

QUALITY



Som Karlas sees Total Quality Management as an indispensable and fundamental approach.

Aiming to expand its market share by raising quality and productivity, Som Karlas sees client satisfaction as part of its quality policy and is sensitive in the areas of active participation of work force in management, motivation and improvement of communication.

In view of modern quality and customer satisfaction concept, Som Karlas continues its research and development activities with all required investments.

“Our goal is to be a preferred brand with our corporate culture, identity and capital structure.”

By taking client satisfaction as basis within the scope of legal statutes and standards:

- Informing clients and earning trust,
- Providing work-force satisfaction and safety,
- Within required delivery period, productively and economically,
- With respect to public and environment,
- Continuous improvement and development,
- Mutually beneficial relationships with business partners and suppliers,
- To function in the sector as a continuously developing brand.



1

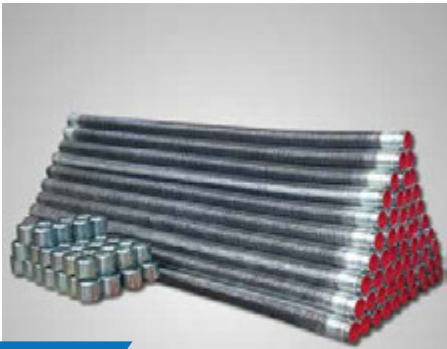
SOM [®] **KARLAS**

SOM KARLAS LAS. SAN. TİC. TUR. LTD. ŞTİ.



SPARE PARTS FOR **CONCRETE PUMP**

“All Manufacturers Names, Symbols And Pictures Listed In This Catalogue Are Used For Reference Purposes Only.”



POM-001

Concrete Pump Hoses



POM-002

Delivery ST-52 Steel Pipe 3000mm



POM-003

5,5" 90° Elbow



POM-004

5,5" 45° Elbow



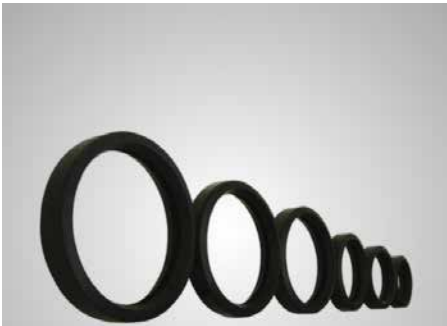
POM-005

5,5" 30° Elbow



POM-006

Ø150 & Ø175 Cleaning Balls



POM-007

Seals



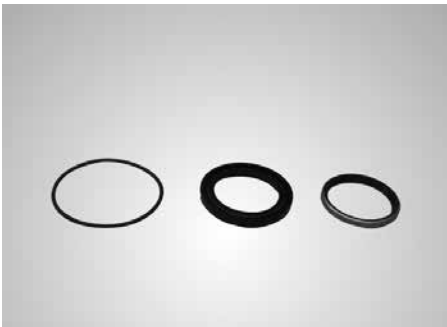
POM-008

Support Plate 50x50



POM-009

Support Plate 60x60



POM-010

OMH 500 Seal Set



POM-011

Bosch Fan



POM-012

Delivery Hose Handle



POM-013

Double Layer Concrete Pump Pipe



POM-014

Double Layer Elbows



POM-015

5,5" Clamp Coupling



POM-016

5,5" Allen Coupling



POM-017

5,5" Mounted Allen Coupling



POM-018

Small Mounted Clamp Coupling



POM-019

Long Mounted Clamp Coupling



POM-020

Round Steel Strip and Rubber



POM-021

5,5" Concrete Pump Pipe Flange



POM-022

5,5" Tightening Strap



POM-023

R1000 Elbow



POM-024

Water Pump



KARLAS

SOM KARLAS LAS. SAN. TİC. TUR. LTD. ŞTİ.



SPARE PARTS FOR PUTZMEISTER



PM-001

1. Outlet Elbow (Foldable Elbow)



PM-002

2. Outlet Elbow (6" Elbow)



PM-003

Reduction Pipe 1200 mm



PM-004

20cm Reduction Pipe



PM-005

Ball Push Lid (Sealing Cover)



PM-006

Ball Push Coupling



PM-007

6" Coupling With Edge



PM-008

6" Coupling With Screw



PM-009

Tower Inside Smooth Thick Pipe 105cm - 107cm



PM-010

S Delivery Pipe



PM-011

5,5" Screw Coupling



PM-012

5,5" Screw Mounting Coupling



PM-013

S - Valve



PM-014

Wear Sleeve



PM-015

Upper Housing Ø80



PM-016

Upper Housing Ø90



PM-017

Seal Set For Upper Housing



PM-018

Outer Housing



PM-019

Seal Set For Outer Housing



PM-020

Plunger Cylinder Ø60



PM-021

Plunger Cylinder Ø80



PM-022

Seal Set For Plunger



PM-023

Ball Cup



PM-024

Slewing Lever Ø80 & Ø90



PM-025

Mixer Shaft Ø60



PM-026

Support Flange Ø60



PM-027

Rubber Disc



PM-028

Spectacle Wear Plate



PM-029

Wear Ring



PM-030

Thrust Ring (Insert Ring)



PM-031

Cauldron Outlet Seal



PM-032

Elephant Spectacle Wearplate



PM-033

Wear Plate and Wear Strip



PM-034

Delivery Piston Sealdia Ø200 - Ø230



PM-035

DN 200 Piston Ram



PM-036

DN 230 Piston Ram 2 Holes



PM-037

DN 230 Piston Ram 4 Holes



PM-038

Cauldron Rubber Band 300x10x2960mm



PM-039

5,5" 30° Elbow



PM-040

5,5" 45° Elbow



PM-041

5,5" 90° Elbow



PM-042

5,5" Clamp Coupling



PM-043

Delivery ST-52 Steel Pipe 3000mm



PM-044

Ø150 & Ø175 Cleaning Balls



PM-045

Bush



PM-046

Battery



PM-047

Concrete Ruber Hose End



PM-048

Hydromotor



KARLAS

SOM KARLAS LAS. SAN. TİC. TUR. LTD. ŞTİ.



SPARE PARTS FOR SCHWING



SW-001

1. Outlet Elbow (New Type)



SW-002

2. Outlet Elbow (New Type)



SW-003

6" Distance Pipe 150-160cm



SW-004

1. Outlet Elbow (Old Type)



SW-005

2. Outlet Elbow (Old Type)



SW-006

6" Coupling With Edge



SW-007

5,5" Towel Inside Elbow 90 + 10cm



SW-008

6" 45° Elbow



SW-009

Reduction Pipe 250-300cm



SW-010

Cup Type Coupling DN 180



SW-011

DN 180 Piston Ram



SW-012

DN 230 Piston Ram



SW-013

DN 250 Piston Ram



SW-014

Cauldron Rubber Band



SW-015

Seal 6"



SW-016

D-Oring 125



SW-017

D-Oring 160



SW-018

Connection Bend DN 180



SW-019

Locking Cap DN 250



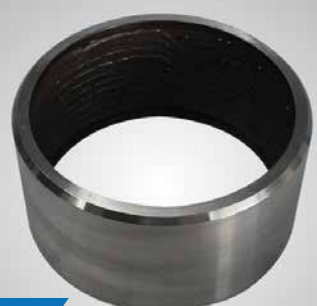
SW-020

Seal Ring DN 250



SW-021

Housing Lining DN 180



SW-022

Cover Lining



SW-023

Battery



SW-024

Hydromotor



SW-025

Rock Valve DN 220/180



SW-026

Slewing Shaft



SW-027

Hexagon Head Bolt



SW-028

Setting Disk



SW-029

Cover



SW-030

Support Bushing



SW-031

Bearing Bushing



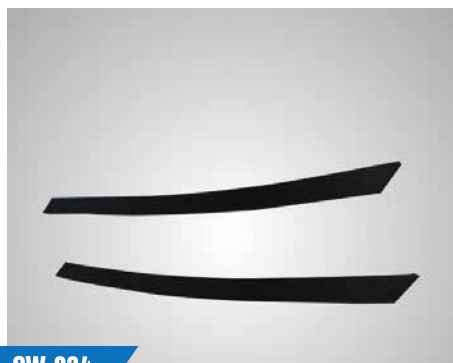
SW-032

Slewing Lever



SW-033

Kidney Seals DN150 - DN180



SW-034

Pressure Spring 210 & 220



SW-035

Cutting Ring 210 & 220



SW-036

Wearing Insert DN200 - DN230



SW-037

Base Plate



SW-038

Rock Valve DN210 / DN180



SW-039

Slewing Shaft



SW-040

Tension Nut



SW-041

Cauldron Mixer Parts



SW-042

Agitator Bearing R



SW-043

Agitator Bearing L



SW-044

Delivery ST-52 Steel Pipe 3000mm



SW-045

5,5" 90° Elbow



SW-046

5,5" Clamp Coupling



SW-047

Ø150 & Ø175 Cleaning Balls



SW-048

Concrete Ruber Hose End

4

SOM [®] **KARLAS**

SOM KARLAS LAS. SAN. TİC. TUR. LTD. ŞTİ.



SPARE PARTS FOR
CIFA



CF-001

1. Outlet Elbow



CF-002

2. Outlet Elbow (New Type)



CF-003

2. Outlet Elbow (Old Type)



CF-004

Reduction Pipe (128,50 cm)



CF-005

Tower Inside Elbow (Flanged)



CF-006

5,5" Special Elbows



CF-007

1. Outlet & 2.Outlet Elbow Coupling



CF-008

5,5" Front Adjusted Coupling



CF-009

5,5" Front Adjusted Coupling



CF-010

Pipe Connection Coupling



CF-011

DN200 - DN230 Piston Ram



CF-012

Sleeve Seal



CF-013

Wibrate Adjusting Wedge DN200



CF-014

Cifa S - Valve



CF-015

Slewing Lever



CF-016

Complete S - Valve



CF-017

Spectacle Wearplate



CF-018

Welding Ring



CF-019

Support Flange - Left



CF-020

Support Flange - Right



CF-021

Mix. Shaft Milled



CF-022

Mix. Shaft Long



CF-023

Water Pump



CF-024

Battery

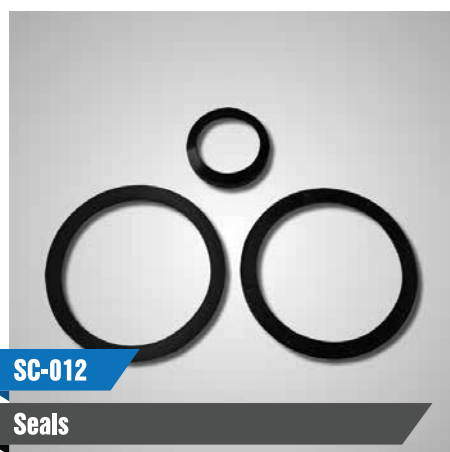
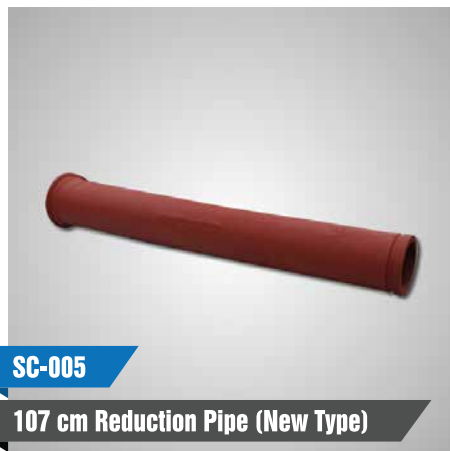


KARLAS

SOM KARLAS LAS. SAN. TİC. TUR. LTD. ŞTİ.



SPARE PARTS FOR SERMAC





SC-013
Support Opened Flange



SC-014
Support Closed Flange



SC-015
Support Inner Flange



SC-016
Mix. Shaft Short Type



SC-017
Mix. Shaft Long Type



SC-018
Cauldron Outlet Flange



SC-019
Cauldron Bottom Lid Rubber



SC-020
Wear Plate



SC-021
Welding Ring



SC-022
Welding Ring Coupling



SC-023
Mixer Flipper



SC-024
Battery



KARLAS

SOM KARLAS LAS. SAN. TİC. TUR. LTD. ŞTİ.



SPARE PARTS FOR REICH



RCH-001

1. Outlet Elbow



RCH-002

2. Outlet Elbow (Long)



RCH-003

2. Outlet Elbow (Weizenger)



RCH-004

Reduction Pipe (100-150cm)



RCH-005

Cauldron Outlet Distance Pipe



RCH-006

Distance Pipe (28,50 cm)



RCH-007

6" Coupling With Handle



RCH-008

DN 230 Piston Ram



RCH-009

Mix. Shaft (Long and Short Type)



RCH-010

Rod Cover Gasket



RCH-011

Wear Plate Fix Seal (Ø200 - Ø230)



RCH-012

Battery

SOM **KARLAS**

SOM KARLAS LAS. SAN. TİC. TUR. LTD. ŞTİ.



SPARE PARTS FOR TRUCK MIXER

“All Manufacturers Names, Symbols And Pictures Listed In This Catalogue Are Used For Reference Purposes Only.”



MIX-001

Drum Rollers



MIX-002

Perno and Shafts



MIX-003

Cover For Roller



MIX-004

Chut - Long Type



MIX-005

Chut - Short Type



MIX-006

Chut Fibre



MIX-007

Chut Step Flat Sheet Iron



MIX-008

Chut Holder



MIX-009

Short Chut Rubber Holder



MIX-010

Chut Lock Set



MIX-011

Double Bearing Water Pump



MIX-012

Water Pump Repair Kit



MIX-013
Water Pump Cifa Type



MIX-014
Water Pump Shaft Type



MIX-015
V Chut



MIX-016
Filling Chut



MIX-017
Discharge Chut



MIX-018
Seal for V Chut



MIX-019
Echo Lid Seal



MIX-020
Chut Manuel Handle



MIX-021
Hydraulic Jack Set



MIX-022
Control Cable (Meter)



MIX-023
Control Box Single



MIX-024
Control Box Double



MIX-025

Balance Ball



MIX-026

Oil Cooler



MIX-027

Axial Fan (10" - 11" - 12") 24V



MIX-028

Electric Motor (Bosch Fan)



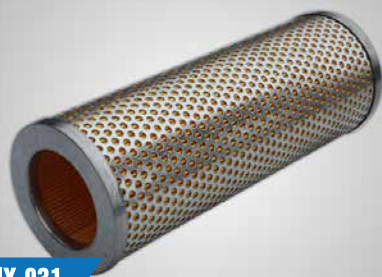
MIX-029

Transmitter Short Type



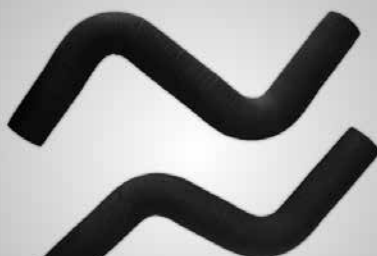
MIX-030

Transmitter Long Type



MIX-031

Oil Filter



MIX-032

S Hose 60mm / Z Hose 60mm



MIX-033

Reductor Rubber Felt 150/165



MIX-034

Chassis Iron Connections



MIX-035

Start / Stop Button



MIX-036

Water Tank Clamp and Seal



MIX-037

1,5" Aluminium Coupling



MIX-038

1.5" Aluminium Coupling



MIX-039

2" Coupling Yellow Pig



MIX-040

2" Coupling Yellow Pig Female End



MIX-041

2" Aluminium Coupling Female End



MIX-042

2" Aluminium Coupling



MIX-043

2" Aluminium Coupling



MIX-044

3.4" Aluminium Coupling



MIX-045

Metal Coupling



MIX-046

Water Meter



MIX-047

Water Hose



MIX-048

Water Hose Nozzle

8

SOM **KARLAS**

SOM KARLAS LAS. SAN. TİC. TUR. LTD. ŞTİ.



SPARE PARTS FOR CONCRETE PLANT

“All Manufacturers Names, Symbols And Pictures Listed In This Catalogue Are Used For Reference Purposes Only.”



SNT-001

4" Butterfly Value With Actuator



SNT-002

3" Seal of Butterfly Value



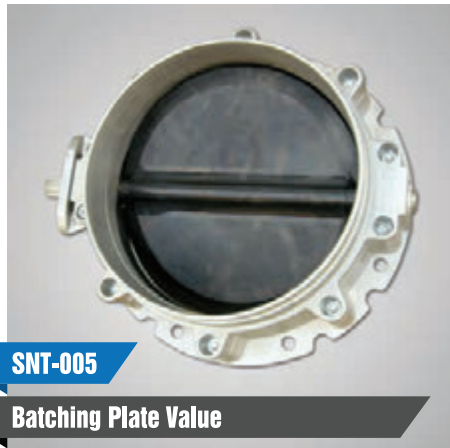
SNT-003

Coreite Band



SNT-004

Attempts Tires



SNT-005

Batching Plate Value



SNT-006

Batching Value Seals



SNT-007

4" Ball Value With Actuator



SNT-008

Siren



SNT-009

Membrane Rubber Ø60



SNT-010

Membrane Rubber Ø80



SNT-011

Roll of Coupling



SNT-012

Batching Spiral Lair



SOM KARLAS LAS. SAN. TİC. TUR. LTD. ŞTİ.



SPARE PARTS FOR SILOBAS



SLB-001

4" Ball Value Sphere



SLB-002

4" Butterfly Value With Handle



SLB-003

4" Seal of Butterfly Value



SLB-004

4" Ball Value



SLB-005

4" Ball Value Spere Parts



SLB-006

Hose 6 Meter (100x115)



SLB-007

5.5" Flange of Plastic Hose



SLB-008

4" Seal (Thin Edge)



SLB-009

Upper Lid Seal (Wide)



SLB-010

Upper Lid Seal (Narrow)



SLB-011

Flange Gasket (2 Holes)



SLB-012

4" Seal (Thick Edge)

NOTES :



ALL THE PARTS, IN THIS CATALOGUE ARE NOT ORIGINAL PARTS.
ALL DESCRIPTIONS AND PICTURES ARE USED ONLY FOR CROSS PURPOSES.

SOM KARLAS®

SPARE PARTS FOR CONCRETE EQUIPMENTS



KARLAS LASTİK SANAYİ TİC. ve TUR. LTD ŞTİ.
HEAD OFFICE (FACTORY): D-100 Karayolu Üzeri Doğanlı Mevkii Düzce/TURKEY
Tel.: +90 380 549 78 01 - 02 // Fax: +90 380 549 78 60
www.somkarlas.com - info@somkarlas.com

